



Here is what you need to know:

- NAMIWALKS GLAC Mental Health Festival is at [Los Angeles State Historic Park](#)
- There is street parking and spots in the lots by the park are \$10. See maps below.
- Each Booth Group will receive one complimentary parking Spot in the adjacent lot.
- Your Group name will be on the Parking Attendant's Lists
- Registration/Check-in starts at 9:00AM.
- Stage and Festival Activities take place from 10:00AM - 2:00PM.
- Walk begins at 11:30AM.
- WALK Route is 3k or go on a longer Route through the Park to do 5K.
- **Everyone** needs to be **registered** even kids. Register [online](#) ahead of time, or stand in line at Registration at the Walk.
- Dogs are allowed with leashes. Enter your furry friend into the annual costume contest on stage. Sign up at the Park.
- Strollers, wheelchairs, wagons, etc... are welcome! Picnics encouraged!

DONATIONS - We haven't made our Goal yet so let's keep [fundraising](#)!

- If you have donation checks, please make them out to NAMI GLAC, and drop them off at Donations in the Registration Booth.
- Credit card and QR Code donations are encouraged on Walk Day.

WALK T-SHIRTS

- Any registered participant who has raised \$100+ will receive a NAMIWalks T-shirt. Get them early because the sizes are first come, first serve.
- Make sure your donations are on your personal NAMIWALKS page. Team funds don't earn members' t-shirts. You can donate \$100 on Walk day for a Walk t- shirt.
- Get your T-shirts early - sizes are first come, first serve.

NAMI Walks Greater Los Angeles County **2024**

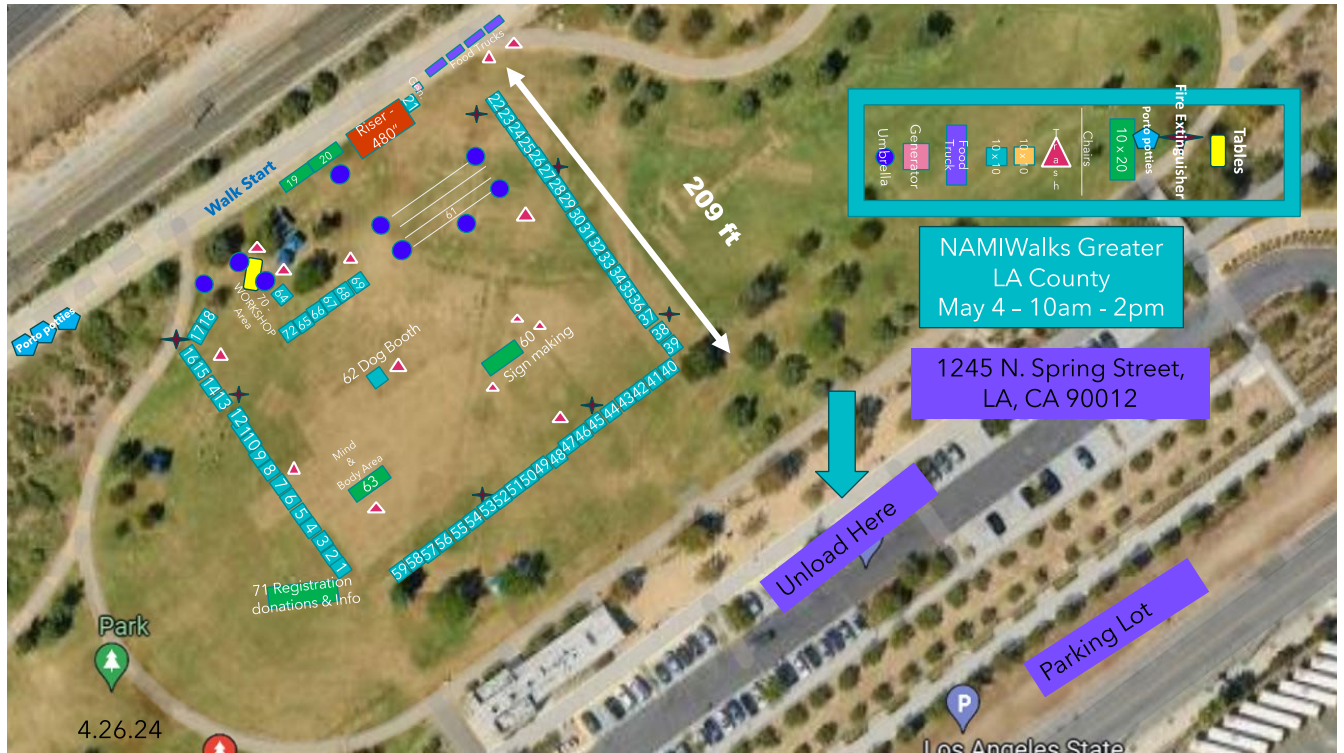
On the Friday and Saturday, call Gigi at 310-850-9519



Parking

Imagery ©2022 Google, Imagery ©2022 CNES / Airbus, Maxar Technologies, U.S. Geological Survey, USDA/FFACI/GEI, Map data ©2022 300 ft

NAMI Walks Greater Los Angeles County 2024



| | | | |
|----|------------------------------------|----|--------------------------|
| # | Group | 51 | Huntington Hospital |
| 10 | 1st Aid & Mental Health Volunteers | 64 | ISEC, Inc/ Workshop Area |
| 69 | 360 Photo Booth Area | 3 | Johnson & Johnson/ |
| 48 | ACHSA | 22 | KNBC4 & Telemundo 55 |
| 45 | Adventist Health Glendale | 34 | KP Teams |
| 8 | AFSP | 37 | LA CADA |
| 23 | Comet Electrical | 31 | L.A. Care |
| 4 | Costco | 16 | LA Galaxy |
| 57 | Del Amo Hospital | 54 | LAPD |
| 49 | LA Dept. of Mental Health | 7 | LAPL |
| 30 | Didi Hirsch Mental Health | 2 | LARCA & Advocacy |
| 13 | Dignity Health | 29 | LASD MET Team |
| 62 | Dog Booth | 27 | Mental Health Hook up |
| 19 | Ellie Mental & Walk Stars | 63 | Mind & Body Area |
| 11 | Enki Health & Research | 44 | NAMI Glendale |
| 35 | Forest Lawn Memorial | 1 | NAMI Greater LA County |
| 61 | Front of Stage | 28 | NAMI Pomona Valley |
| 25 | Gateways Hospital and MH | 32 | NAMI San Fernando Valley |
| 42 | Glow Media | 52 | NAMI San Gabriel Valley |
| | | 56 | NAMI South Bay |

- 38 NAMI Whittier & Long Beach
- 5 Neurocrine Biosciences
- 15 NRC Research
- 67 Nsight Mental Health & Wellness
- 40 Ocean View Psychiatric Hospital
- 53 Pacific Clinics
- 24 Pankow & SmithGroup
- 50 Parexel
- 39 Photo Area with Long Beach
- 33 Recovery International
- 71 Registration, Donations & Info.
- 46 Rowii Teen & Parent
- 26 SEIU 721
- 60 Sign Making
- 12 SOCAL Psychiatric Society
- 41 Social Model Recovery Systems
- 21 Sound Booth
- 66 Southland Credit Union
- 55 Stars Behavioral Health
- 72 Sycamores
- 36 Tarzana Treatment Center
- 17 Teen Talk App
- 9 Telecare
- 6 The Good Seed
- 43 Transformative Care
- 65 UCLA Candy Lab
- 14 United Healthcare
- 47 USC Verdugo Hills
- 68 VA - bringing own
- 20 VIPs - next to the stage
- 18 Volunteers
- 59 Voter Registration/LWV
- 70 Workshop
- 58 YAI Start Program/MH & Disability

NAMI Walks Route

LA State Historic



Lap 1 - 3K

Lap 2 - 5K