


1. Log into your Walk MS account on [www.WalkMS.org](http://www.WalkMS.org)
2. Go to your Dashboard

The screenshot shows the Walk MS dashboard for the Greater Los Angeles 2022 event. At the top, there is a navigation bar with icons for 'Your Page', 'Team Page', 'Dashboard', 'Donations', 'Messages', 'Resources', and 'Activity Tracking'. A user profile 'Welcome, Courtney.' is visible in the top right corner. Below the navigation bar is the 'walk MS' logo and a menu with 'ABOUT WALK MS', 'FUNDRAISING', 'FIND YOUR WALK', and 'CONTACT US'. A green banner contains the 'EVENT MENU' with links to 'Home', 'Registration', 'Walk Details', 'Volunteer', and 'Sponsors'. The main content area is titled 'Dashboard' and includes the event name 'Walk MS: Greater Los Angeles 2022', the event date '04/24/2022' in Pasadena, CA, and the team name 'Team in Motion CAL' with captain 'Jennifer Wise'. A prominent green button says 'VISIT THE REWARDS STORE & REDEEM POINTS'. Below this are tabs for 'Your Fundraising' and 'Your Team Fundraising'. The 'Your Stats' section displays six key metrics: Team Rank (4/4), Overall Rank (180/576), Donor Emails Sent (0), Donations Received (1), Largest Donation (\$25.00), and Average Donation (\$25.00). A 'Your Fundraising' sidebar on the right offers options like 'View Your Page', 'Make a Donation', 'View Donations Received', 'Register My Child', and 'Create a Facebook Fundraiser'. At the bottom, there are browser tabs for 'Walk MS 2022 In...' and 'society Inno 2022...



[Detailed PC instructions](#) |  
[Detailed Mac instructions](#)

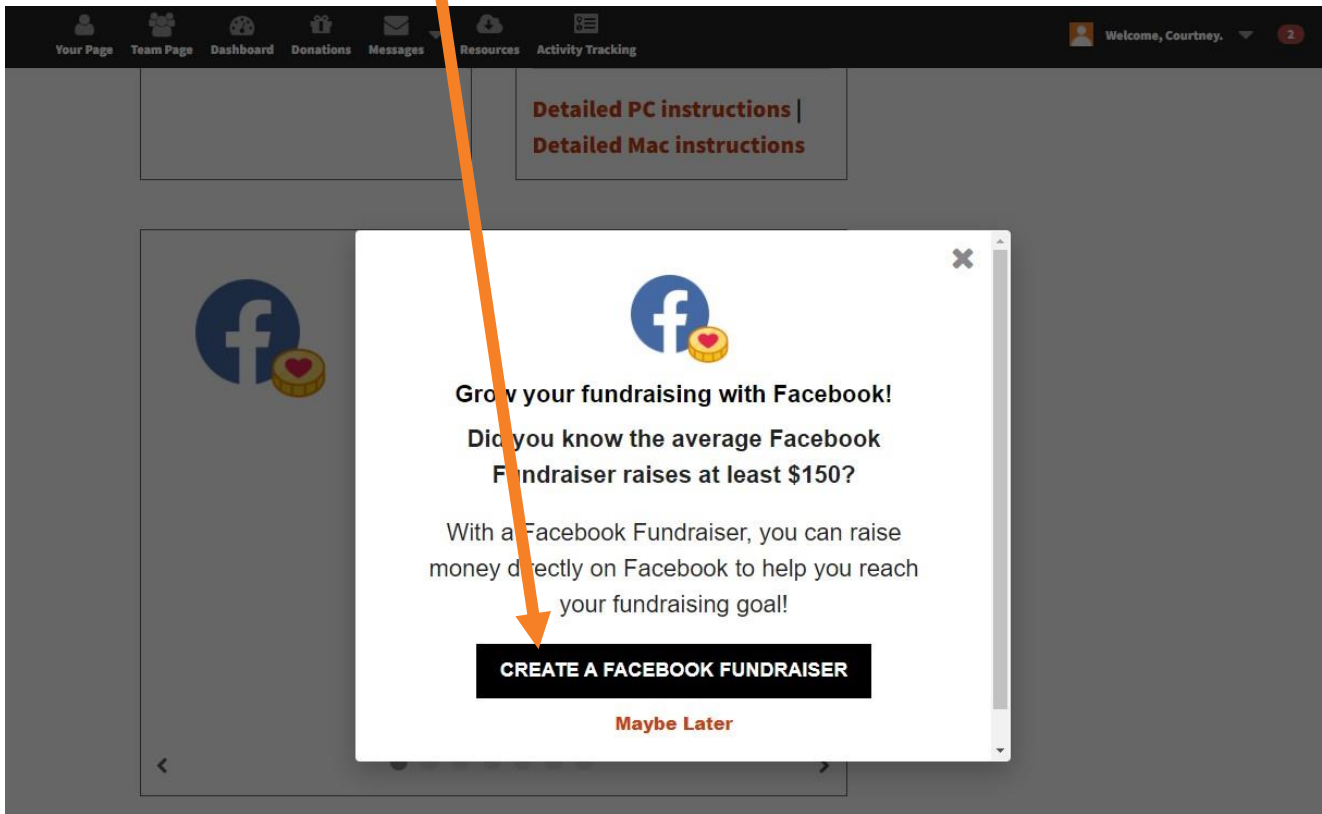
3. Scroll down to the bottom of the Dashboard until you see the “Fundraise on Facebook” icon/section.
4. Click on the green “Create A Facebook Fundraiser” button.

 Fundraise on Facebook

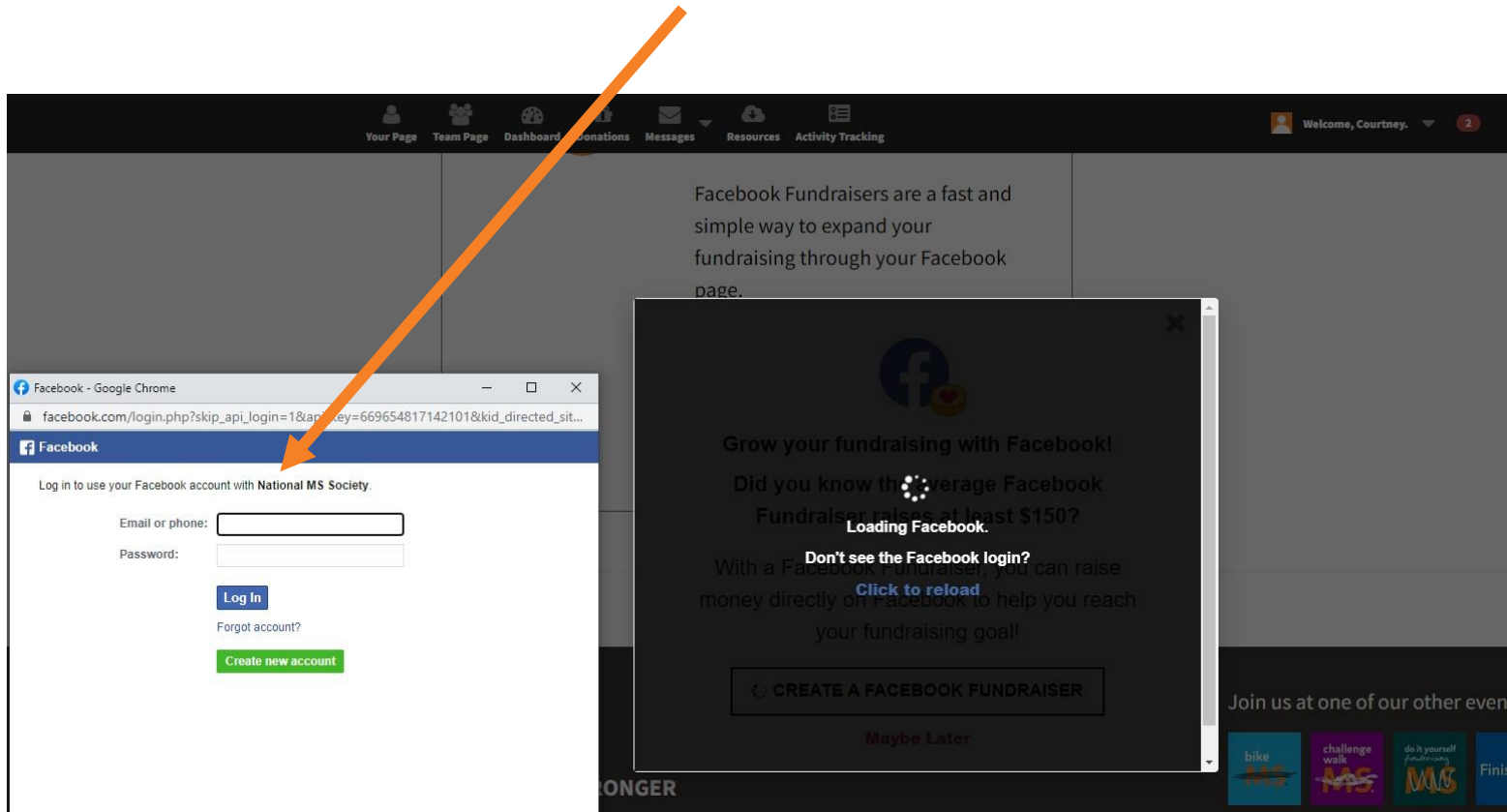
Facebook Fundraisers are a fast and simple way to expand your fundraising through your Facebook page.

**CREATE A FACEBOOK FUNDRAISER**

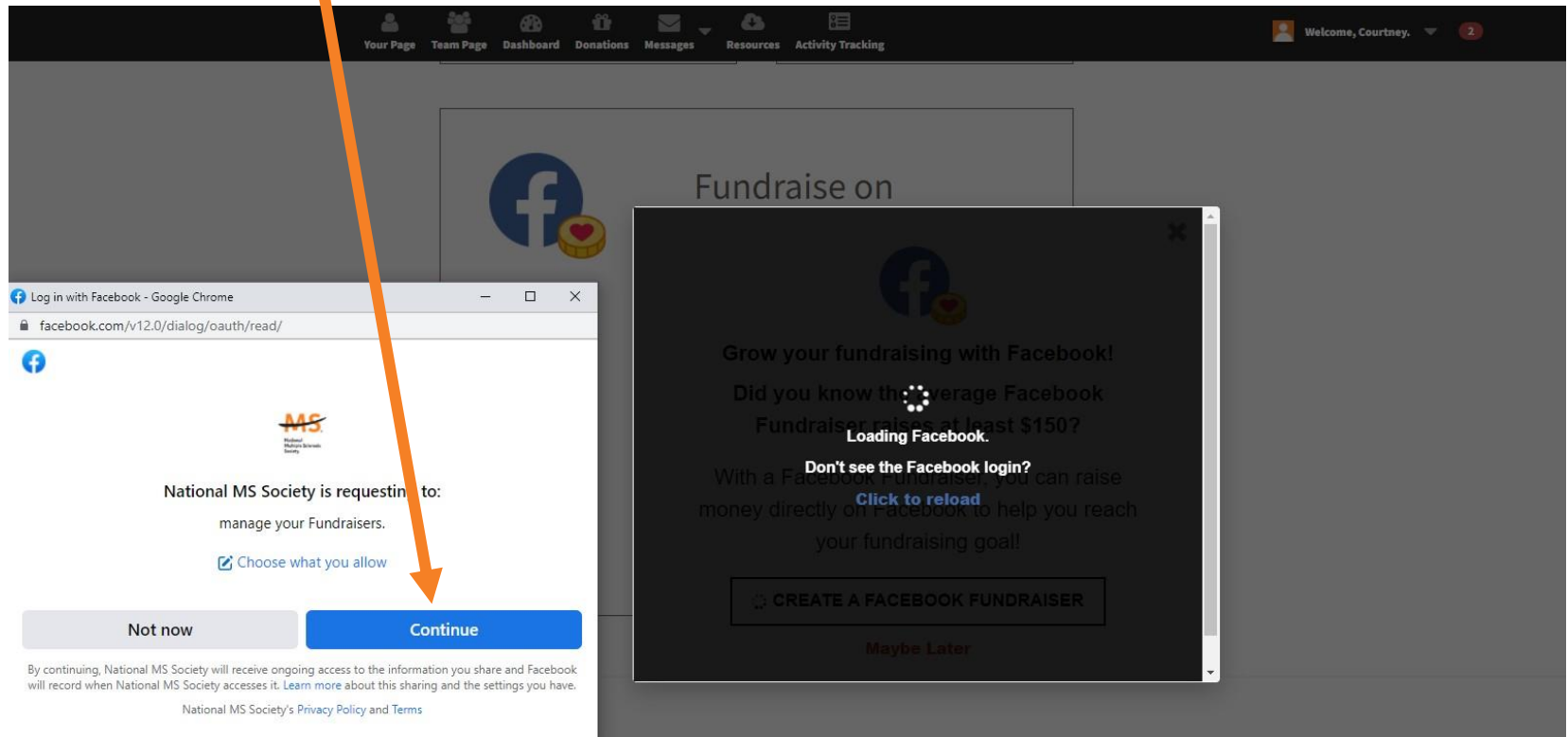
5. A new box will pop up – click on “CREATE A FACEBOOK FUNDRAISER.”



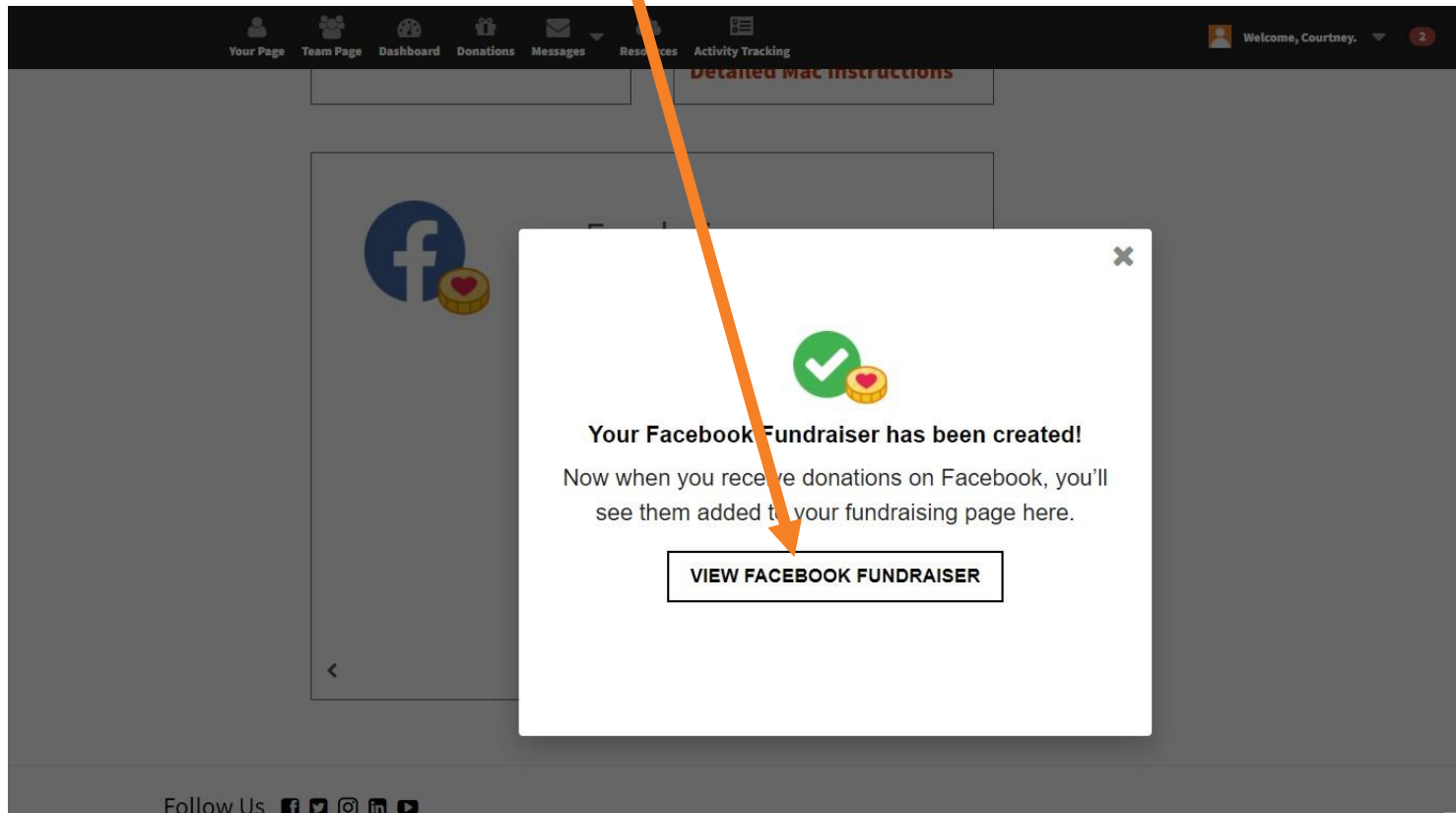
6. The Facebook Sign In Center will launch – enter your email or phone and password then click “LOG IN”



7. The Facebook Permissions box will open – click CONTINUE.



7. Now your Facebook Fundraiser has been linked/create. Click on “VIEW FACEBOOK FUNDRAISER” to check the status and share.



8. Review your fundraiser – you can edit your text, add updates and share to your page or with friends.

**Courtney's Fundraiser for Walk MS: Greater Los Angeles 2022**  
Fundraiser for National Multiple Sclerosis Society by Courtney Garvin Walkms · 🌐

[Donate](#) [Share](#) [...](#)

**Goal** [Edit](#)  
\$0 raised of \$500 267 days left  
Be the first to donate!  
[Donate](#)

Write something...  
[Photo/video](#) [Tag friends](#) [Feeling/activity](#)

**About** [Edit](#)  
Our goal—a world free of MS.  
I've signed up for Walk MS—a charity walk that is changing the lives of people with MS and helping fuel progress toward a world free of MS. I'd love your generous support as I prepare for my walk.  
Multiple sclerosis (MS) is an unpredictable, often disabling disease of the central nervous system that disrupts the flow of information within the brain, and between the brain and body. MS is different for everyone, and that makes it all the ... [See more](#)  
Courtney Garvin Walkms · March 4, 2022

**Fundraiser progress**  
No one has donated to your fundraiser yet. Invite friends and share your story to build momentum.  
0 donated 0 invited 0 shared  
Be the first of your friends to donate!

**Share update**  
Introduce your fundraiser by sharing it on News Feed. Tell friends why you're raising money and how they can help.  
Thanks for the support so far...  
[Share fundraiser](#)

**Fundraiser link**  
Copy your fundraiser link to share it through email, Instagram, Twitter or wherever else you connect with friends.