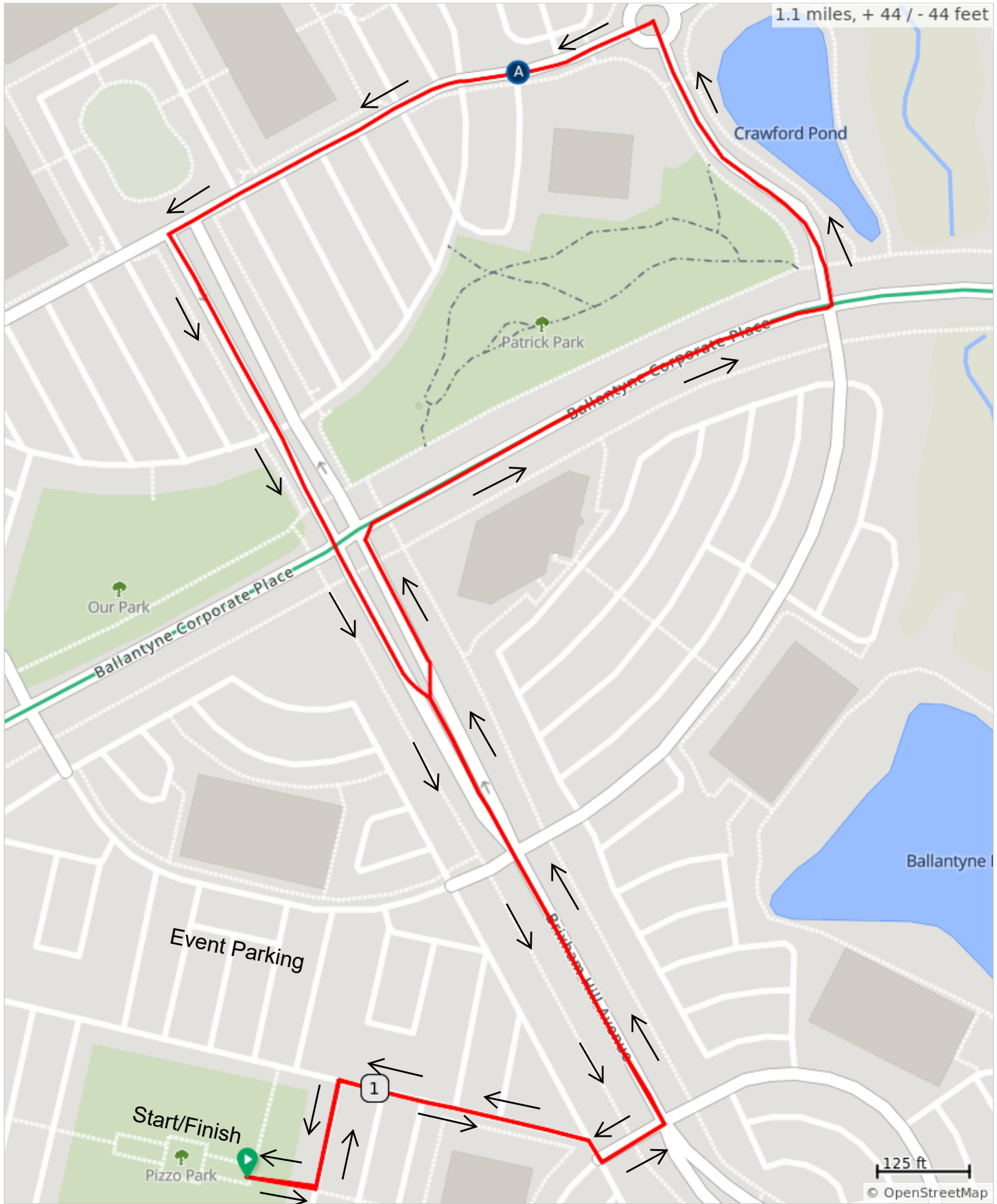



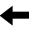





Walk MS: Charlotte (1-Mile)

Site Opens: 8:30am
Program Begins: 9:50am
Walk Starts: 10:00am

A. Hydration Station #2



Walk MS: Charlotte (1-Mile)

Type	Dist	Note
	0.0	Start of route
	0.1	Left
	0.8	Continue onto Brixham Hill Ave
	0.9	Right
	0.9	Right
	0.9	Left
	1.1	End of route

1.1 miles. +43/-44 feet