



National Multiple Sclerosis Society

NATIONAL TEAM 2023 IMPACT REPORT



Presented To:



Microsoft

Dear Microsoft,

Thank you for your commitment to changing the world for people affected by MS. You are inspiring! We are blown away by your support and generosity this year.

We are racing faster than ever toward cures for all people with MS. For the nearly 1 million people living with MS and those who love and support them, the Society is a trusted partner striving to equip each person with exactly what they need, when they need it. Your dedication helps make progress possible.

In 2023, our National Teams raised \$9.2 million among 8,000+ event participants. Thank you for taking your place among these amazing leaders as we work to end MS forever.

Our mission is: We will cure MS while empowering people affected by MS to live their best lives. We approach this with intentionality. Curing MS is within our reach and the Pathways to MS Cures scientific roadmap has garnered the global consensus to lead us there. The MS Navigator Experience provides customized support and connection, so people affected by MS know they're not alone. We are tirelessly advocating on a state- and federal level to amplify the voices of people affected by MS. Without your support, none of it would be possible.

We are deeply grateful for your partnership in this crucial work. Thank you for everything you do.

Yours truly,



Cyndi Zagieboylo
President & CEO
National MS Society



NATIONAL TEAM HIGHLIGHTS

- **Microsoft is the #6** (out of 30) Top Fundraising National Team
- Microsoft employees strengthened their connection to the MS Society's mission by participating in **two Micro-Giving events** throughout the year
- **4 Microsoft employees** served on their local **MS Society Board of Trustees**.
 - **Chuck Edward**, Corporate Vice President of Human Resources, became **Board Chair** in the Greater Northwest
 - **Cheri Devlin**, US Sales Director Business Applications GM, served as **Board Chair** in Northern CA
 - **Ryan Asdourian**, GM- Americas Security Business Group Lead, serves in the Greater Northwest
 - **Tracey Cooley**, Director of Microsoft Technology Center, serves in the Gateway Area
- Microsoft expanded its footprint **with 7 new teams**.
- Microsoft amplified team fundraising with **\$77,928 in matching funds**
- **8 Microsoft teams** strengthened the MS Movement by recruiting **10+ members**.
- The **Deception Pass Microsoft Team** achieved **\$2 million in lifetime fundraising** and won the **Big Wheel and Best Team Tent Awards**.
- **Melvin Harnett** shared his MS story at **Walk MS: Colorado Springs** as their **mission speaker**.
- The Microsoft team **cut the opening ceremony ribbon at Walk MS: Washington DC**
- **69%** of team members have a **mission connection**
- **44 members raised over \$1,000**



2023 NATIONAL TEAM IMPACT

249 
TEAM MEMBERS

Rallied together
across the U.S.A

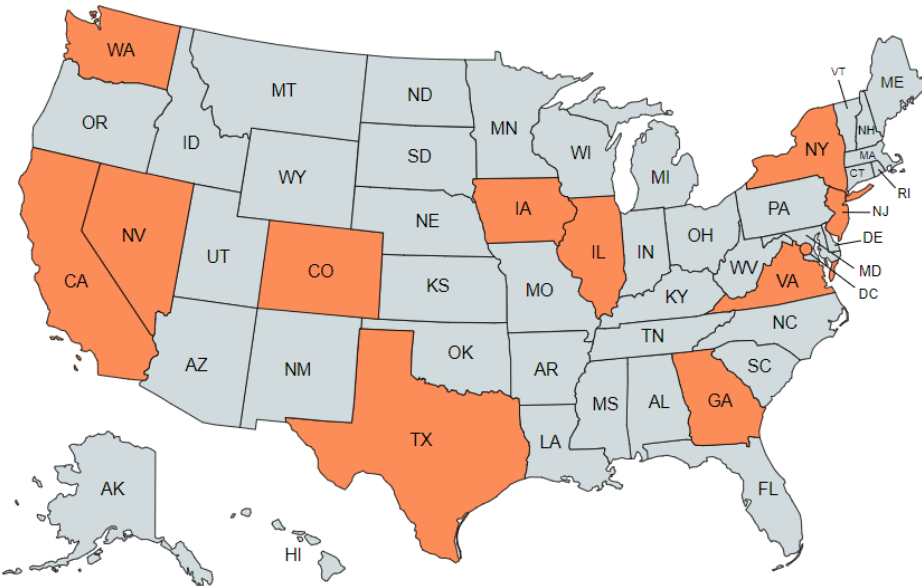
21 
TEAMS

Participated in
Society events

OVER 
\$267,000
TOTAL FUNDRAISED
In support of the
MS community

Top Fundraising Teams

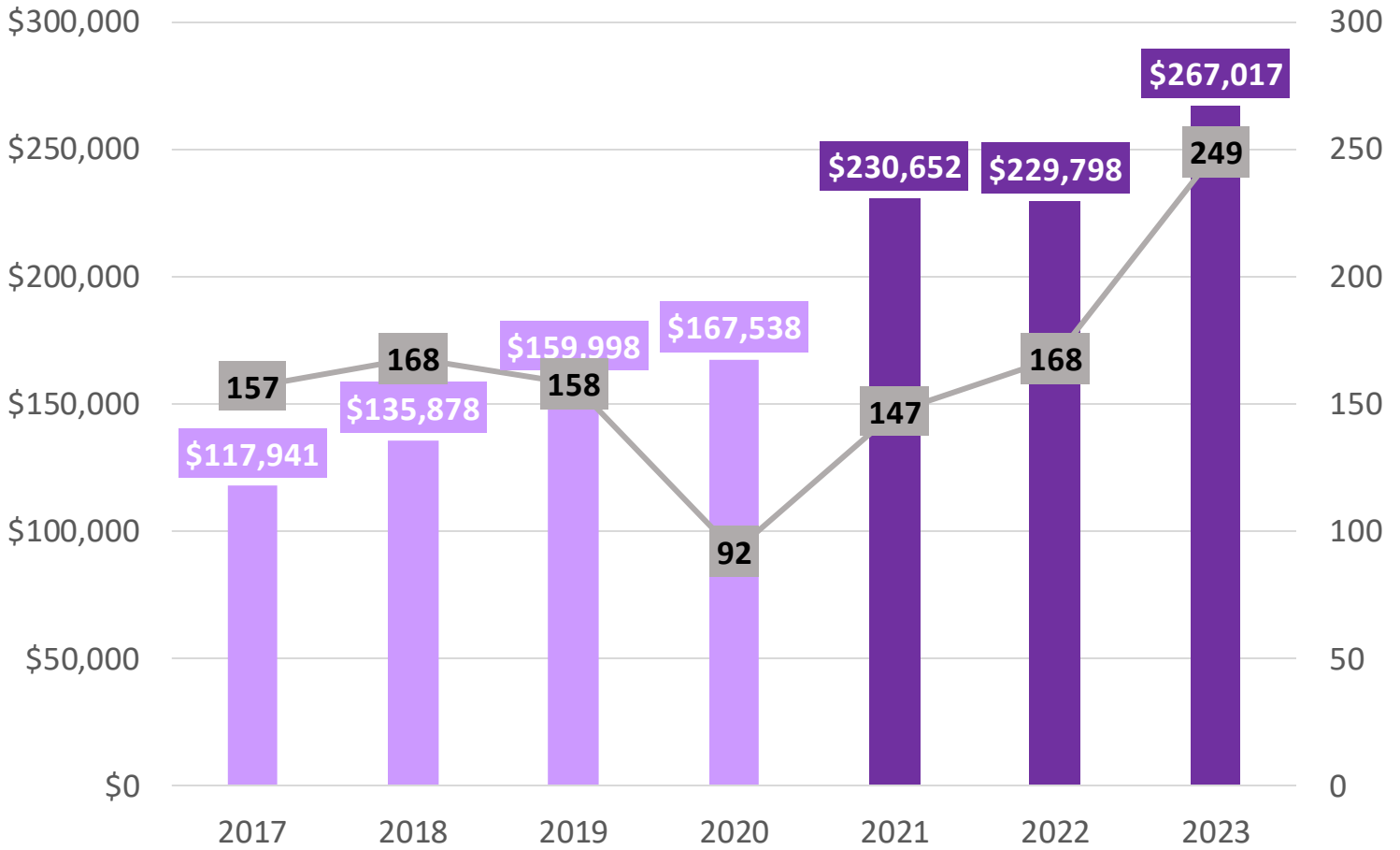
1. Microsoft	Bike MS: Deception Pass Classic	\$189,395
2. Microsoft (Houston)	Bike MS: Texas MS 150	\$11,183
3. Pirates of the Cureibbean	Walk MS: Colorado Springs	\$9,479
4. Microsoft- City to Shore	Bike MS: City to Shore Ride	\$8,234
5. Team Paige & Cassie / Microsoft DC	Walk MS: Washington D.C.	\$7,890






“For more than two decades, Microsoft has been passionate about supporting the National MS Society's mission. Our employees, joined by friends and family, have collectively raised over \$2 million, reflecting our commitment to making a positive impact. Together, we stand united to bring awareness, support our colleagues, and work towards a future where no one faces MS alone” Chuck Edward, Corporate Vice President at Microsoft

NATIONAL TEAM HISTORICAL DATA

2017-2023



 Pre-National Team Fundraising  National Team Fundraising
 Team Members

Your investment is making a difference in the lives of people affected by MS.

With a community of more than 3.2 million supporters by our side, we will ensure every person living with MS will have what they need to live their best lives.

100% 
OF PEOPLE AFFECTED BY MS nationwide have access to a MS Navigator — a dedicated partner for overcoming challenges

24,905 ANNUAL PROGRAM PARTICIPANTS 
People who participate in Society programs live better lives — they are less isolated, better informed and happier

 **OVER 87,000 HEALTHCARE PROVIDERS** engaged with the Society through in-person and virtual support

 **388 ESTABLISHED PARTNERSHIPS** with high-quality MS care centers

39,809 MS ACTIVISTS  influence policy for people with MS — including grants for millions of family caregivers, tax credits for home modifications, and billions in federal MS research funding

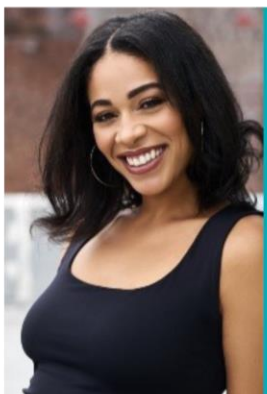


“Anytime I meet someone affected by MS, I give out a Society card with a smile, knowing that the Society will be there for them, too.”

– Douglas, MS Activist and Carepartner

Launched the careers of over 120 HEALTHCARE SPECIALISTS that provide care to over **100,000 PEOPLE WITH MS**

 **Funded over \$1.1 billion IN RESEARCH** since 1946



“It really put things into perspective for me: all of the sadness and adjustments of a diagnosis, but on the other hand, it’s like a superpower. A superpower because it gave me this opportunity and platform to make change and be the change.”

– Victoria, diagnosed in 2012

Paved the way for ALL MS TREATMENT OPTIONS that exist today

Provided early career support and funding to NEARLY EVERY RECOGNIZED MS RESEARCHER today

Established the FIRST GLOBAL RESEARCH ROADMAP to accelerate cures — Pathways to Cures in MS



**National
Multiple Sclerosis
Society**

1-800-344-4867

nationalMSSociety.org

National Team Captain-

[Vikki Edwards](#)

MS Society Director of

National Teams-

[Sarah Meike](#)