



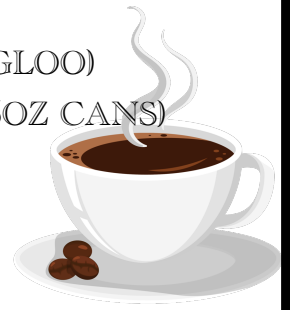
## MS150 MENU

### BREAKFAST

- SAUSAGE PIG LINKS
- FRUIT KOLACHES
- CINNAMON ROLLS
- BEEF CHIMICHANGAS
- GRANOLA BARS



- COFFEE (4 GALLON IGLOO)
- ORANGE JUICE (48/5.5OZ CANS)



### LUNCH

DELI SANDWICH OPTIONS:

- TURKEY HOAGIE
- HAM AND CHEESE
- HUMMUS
- PEANUT BUTTER AND JELLY



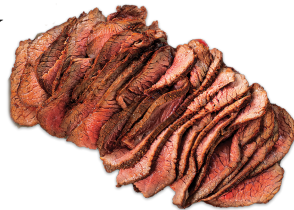
- ASSORTED CHIPS
- FRUIT
- JERKY



### DINNER

MEAT OPTIONS:

- MEAT LASANGA TRAYS
- VEGGIE LASANGA TRAY
- BRISKET
- CHICKEN BREAST
- PULLED PORK



SIDE OPTIONS:

- GREEN SALAD SERVED W/RANCH
- BAKED POTATO SALAD (CHILLED)
- CLASSIC POTATO SALAD (MAYO/MUSTARD)
- ITALIAN PASTA
- DINNER ROLLS
- TEA (UNSWEET) (SWEET)



\*\*\*SERVED W/PICKLES, ONIONS & SAUCE\*\*\*

**DESSERTS: ASSORTED CAKE SQUARES, SUGAR/CHOCOLATE CHIP COOKIES, BROWNIES, RICE KRISPIES**

\*\*\*DELIVERY AVAILABLE\*\*\*

**additional questions/quotes: Mari @979-702-1017 call/txt  
email: lgtx1001@gmail.com**