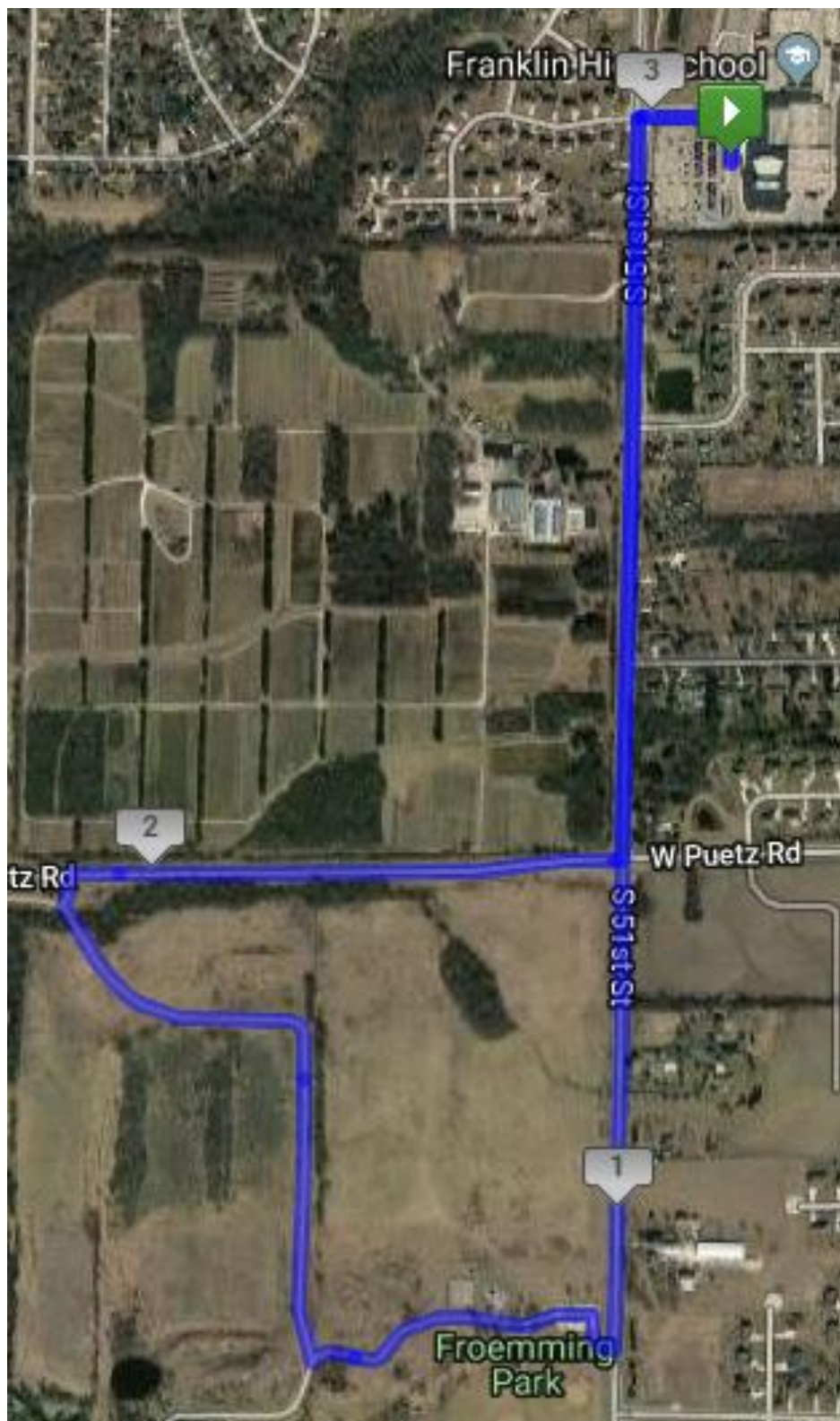


2019 JINGLE BELL ROUTE – FRANKLIN, WI





Route Directions

1. Head North through Start line in parking lot.
2. Turn Left onto High School Driveway and head West.
3. Turn Left onto S 51st St. and head South.
4. Pass Mile #1
5. Turn Right into Froemming Park driveway and follow Oak Leaf Trail West.
6. Turn Right at Oak Leaf Trail junction and head North.
7. Turn Right at next Oak Leaf Trail Junction and head North towards Puetz Rd.
8. Turn Right onto Puetz Rd. and head East.
9. Pass Mile #2
10. Turn Left onto S 51st St. and head North.
11. Turn Right into High School Driveway and head East.
12. Pass Mile #3
13. Turn Right at building and head South through the Finish line.

START/FINISH LINE CLOSEUP



We will place the S/F line around the arrows already painted on the ground in front of the school. While it is not in front of the steps, I believe the S/F location is optimal. People can use the ramp to walk down and gather behind the start (south of line). After they finish you can use water and medals to draw people down past the planter wall and let them take the ramp back up to the school if necessary.