

Information

ACCOMMODATIONS

We want your stay with us to be pleasant and safe, so please remember that you will be asked for your identification when checking into dorms at all facilities. If you cancel your participation in the Trek your dorm bed will go back into inventory and given to another participant.



DORM BED BATES & ST. JOSEPH'S

You will receive your dorm bed assignment with your check-in packet materials.



CAMPING BATES COLLEGE

The camping area is located next to the baseball field/Trek finish chute. Showers are available in the Merrill Gymnasium until 10pm. A portable toilet and water will be available. Please plan for all the weather conditions. No RV's are allowed.



CAMPING ST. JOSEPH'S COLLEGE

Camping area is located behind the Alford Center. Showers are available in the Fieldhouse. No unauthorized vehicles or RV's are allowed to park in the camping area.

WHAT TO BRING

Bedding:

You are required to provide your own bedding and toiletries. Please visit TrekAcrossMaine.org and check the Trekker Guide in Resources for a full suggested pack list for Trek weekend.

Luggage:

Each Trekker is allowed two pieces of soft-sided luggage or duffle bags. Campers are allowed three pieces to accommodate for their tents. You will be carrying your luggage to and from the pick up/drop off locations for the luggage trucks each day. A personal ID tag must be attached to each piece of your luggage. There is a 25lb weight limit on all luggage pieces.

OFF CAMPUS

We are pleased to announce hotel and camping partnerships for the 2025 Trek Across Maine. Please note: If the room blocks for The Trek Across Maine are full, you can still book a room through the hotel, given availability, but it will be at the hotel's usual nightly rate. If you choose this option, you are responsible for making your own arrangements (camping, hotel, staying at home, etc.)

Camping is not available at Pineland Farms. We encourage you to check out [Bradbury Mountain State Park campsites](#). The state park is located just 10 minutes from the start/finish line.



Book your
HOTEL

THURSDAY HOTEL

Thursday, June 12th: Fairfield By Marriott Brunswick- Freeport, 36 Old Portland Road, Brunswick, Maine, 04011. For booking, please call directly at 207-721-0300 and mention The Trek Across Maine. Click [here](#) to book now!

No shuttle service will be provided. You are required to plan your own transportation to and from this location.

FRIDAY HOTEL

Hampton Inn Lewiston-Auburn, 15 Lincoln Street Lewiston, ME 04240. For booking, please call directly at 207-344-1000 and mention The Trek Across Maine. Click [here](#) to book now!

Shuttle service will be provided by the American Lung Association to this hotel only.

SATURDAY HOTEL

Saturday, June 14th: Microtel Inn & Suites by Wyndham Windham, 965 Roosevelt Trail, Windham, ME 04062. For booking, please call directly at 207-893-8870 and mention The Trek Across Maine.

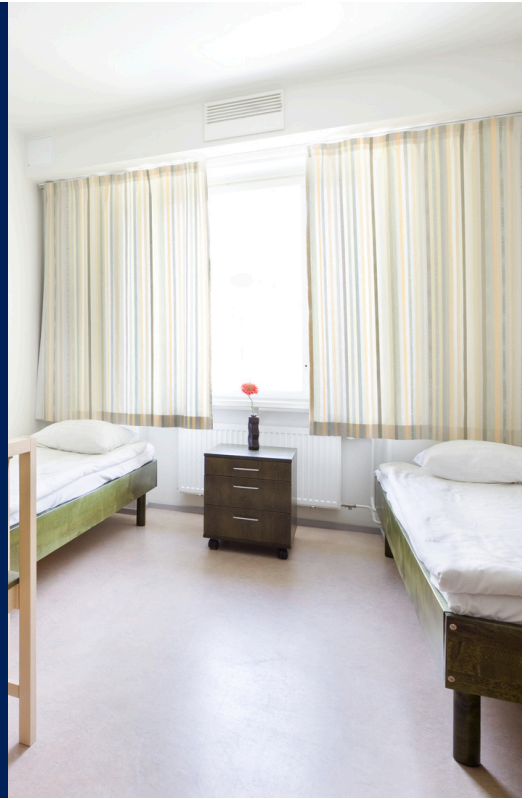
Shuttle service will be provided by the American Lung Association to this hotel only.

For more information on booking your hotel room, email Emily at Emily.Lewis@Lung.org.

Waiting list DORM BED

Dorm beds at the Trek Across Maine typically are filled on a first come, first serve basis. We are able to offer a waiting list for dorm beds to be filled at the end. The procedure is:

- Visit the rooming table at Pineland Farms on Thursday, June 12, to add your name to the wait list. No names will be accepted or added to the list before this date.
- The waiting list will be capped at 200 names on a first come, first serve basis.
- You may request a bed in the same room as a family member or friend that is currently registered. We will do our best to accommodate these requests.
- Each facility has a dorm bed waiting list table. Visit the Gray Cage at Bates College or the Alford Rec Center at St. Joseph's College.



SHUTTLE SERVICE

Shuttle Services will be provided at designated times to the listed hotels in the Lewiston and Standish area. The shuttle for the hotels listed above will be parked by the off site luggage tent.

Please refer to your campus map and your trek event weekend schedule for more information. pre-event or at check-in).



QUESTIONS

If you should have any questions regarding your stay during Trek weekend please reach out to us. We will help you navigate the overnight process. It's our goal to ensure your experience is a great one!

Email TrekAcrossMaine@Lung.org with your questions.

Celebrating our 41st Anniversary

